

Journey to Southern



Africa

LUXURY SAFARIS | ROVOS RAIL | CAPE TOWN

SPONSORED BY



Michigan State University
Alumni Office

January 5-21, 2025

Other dates available upon request



Dear Spartan Alumni and Friends,

Encounter incredible landscapes and untouched natural wonders on this awe-inspiring journey through South Africa, Zimbabwe and Botswana. Search for exotic wildlife while on safari in three world-class parks: Chobe National Park, Hwange National Park and Kapama Private Game Reserve. Plus, experience a bygone era as you wind through the colorful countryside aboard the luxurious Rovos Rail.

From the vibrant cities of Cape Town and Johannesburg to spectacular safari destinations to one of the Seven Natural Wonders of the World, each day of this once-in-a-lifetime adventure invites new discoveries and memorable moments. Follow the path of Nelson Mandela on Robben Island, and talk with the friendly locals of Soweto township. Marvel at brilliant bird species, playful monkeys and elegant giraffes, and search for the Big Five: lions, leopards, rhinos, elephants and buffalo. As you journey through this sun-soaked land, uncover a melting pot of cultures, customs and fascinating landmarks steeped in history, experiencing the best that this remarkable region has to offer!

This exclusive program combines unbeatable value and luxury. Space is limited to ensure maximum comfort, so we encourage you to make your reservation today.

Go Green!

Regina Cross BS '91
Director, Spartan Pathways Travel Program
Michigan State University Alumni Office
888-697-2863

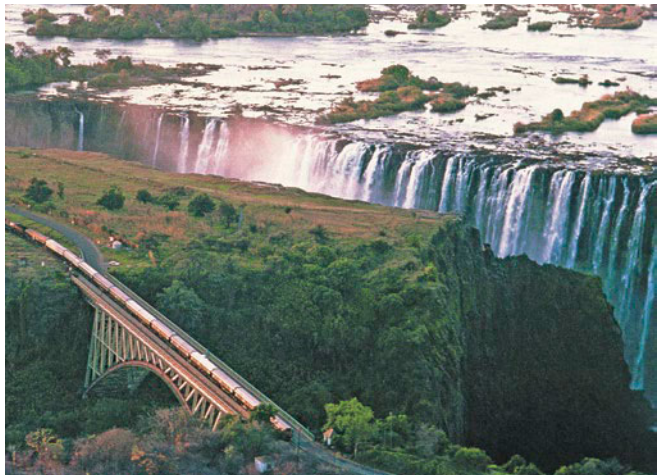
The Michigan State University Alumni Office strongly recommends you purchase travel insurance. Travel insurance information will be sent to you with your email confirmation from the MSU Alumni Office.

UNESCO World Heritage

1. **Robben Island**, South Africa
2. **Cape Floral Region Protected Area**, South Africa
3. **Victoria Falls**, Zimbabwe
4. **Matobo Hills**, Zimbabwe



King protea, Cape Floral Region



Rovos Rail, Victoria Falls



A World of Discovery



Encounter an extraordinary land of contrasts, from exotic wildlife to vivacious Cape Town, thundering Victoria Falls to legendary wildlife reserves. Trace a compelling route to Robben Island and fascinating towns that hold powerful history lessons. With expert guides leading the way, discover the density and diversity of animals in southern Africa's most incredible safari destinations. Plus, travel through grassy plains on a bespoke train journey aboard the elegant Rovos Rail.

Top: Victoria Falls, Zimbabwe | Above: Safari
Cover: Lion | Mail panel: Bo Kaap, Cape Town | Rovos Rail

Inspiring Moments



- Experience the thrill of safari and marvel at incredible wildlife in **South Africa, Botswana and Zimbabwe.**
- Delight in the awe-inspiring power and grand cascades of **Victoria Falls.**
- Surround yourself in classic luxury and stirring scenery aboard **Rovos Rail.**
- Walk in the historic footsteps of Nelson Mandela on **Robben Island.**
- Meet the young people involved in projects at a **Soweto youth center.**
- Immerse yourself in the easygoing lifestyle of **Cape Town**, South Africa's oldest city.
- Experience four **UNESCO World Heritage sites.**



African penguin, Boulder Beach
Cape Peninsula



Victoria & Alfred Waterfront, Cape Town

Days 1 & 2 | In Transit

Depart for Cape Town, South Africa. 🌐

Day 3 | Cape Town, South Africa

Upon arrival in Cape Town, transfer 🚗 to your hotel. The Belmond Mount Nelson Hotel is a Cape Town landmark located across the street from the Company's Garden.

Later, join us for a Welcome Reception.

Day 4 | Cape Town

Cape Peninsula. Your adventure begins! Set out to discover the region's alabaster beaches and sleepy fishing villages. Take a scenic drive to Cape Peninsula, passing the buttresses of the Twelve Apostles, and see a colony of adorable African penguins at Boulders Beach. Dig into local cuisine during a group lunch.

Enrichment: South African History.

Day 5 | Robben Island | Cape Town

Cape Town. Hop on a ferry for a ride to Robben Island and tour the jail where Nelson Mandela was incarcerated. Your guide, a former prisoner of Robben Island, offers first-hand insight. After, discover the many highlights of South Africa's Mother City. Drive through the Company's Garden district, see the Castle of Good Hope and stroll along a bustling harbor.

Day 6 | Victoria Falls, Zimbabwe

Fly to Victoria Falls. Upon arrival, transfer to the Victoria Falls Hotel.

Victoria Falls. Feel the cool mist as you revel in the planet's largest curtain of water. Twice the height of Niagara Falls, Victoria Falls casts a veil of spray that can be seen up to 50 miles away!

Day 7 | Chobe National Park, Botswana

Safari: Chobe National Park is a spectacular destination for birdwatchers and the Chobe River gives life to the many animals, birds and reptiles that call the park home. Watch birds swooping down to catch a fish, hippos swimming and elephants playing in the water. You may also glimpse hyenas, warthogs, rare puku and more!

Day 8 | Victoria Falls, Zimbabwe | Rovos Rail

This afternoon, embark Rovos Rail at Victoria Falls Station and begin your train journey. Settle in your suite and enjoy the ambience of a train journey recapturing the Golden Age of Travel.

Day 9 | Hwange National Park

Safari: Rise early for a sunrise safari at The Hide, a private concession in Hwange National Park. This park, known for its natural beauty, is home to more than 100 mammal and 400 bird species. Visit one of the most popular watering holes to see some of the local residents!

Travel along one of Africa's longest stretches of straight railway line.

Day 10 | Matobo National Park

Matobo National Park. A game drive showcases this park's wild landscape that features majestic granite scenery and *kopjes*, giant balancing rocks. See ancient rock art caves and the burial site of Cecil Rhodes.

Day 11 | Zimbabwe | South Africa

Enter South Africa and cross the Tropic of Capricorn.

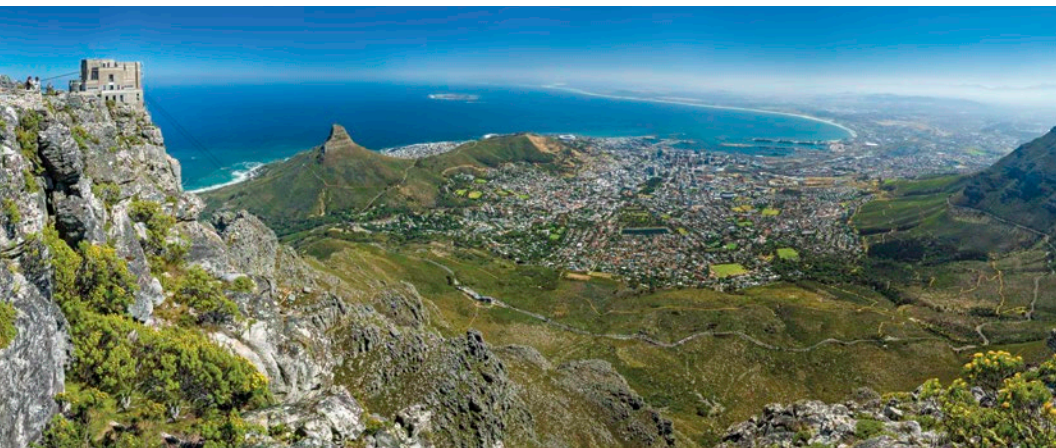



Table Mountain overlooking Cape Town

Day 12 | Pretoria | Soweto | Johannesburg

After breakfast, disembark the train in Pretoria and continue your adventure in Soweto.

 **AHI Connects | Soweto.** Visit the township of Soweto, and drive by the homes of Nelson Mandela and Archbishop Desmond Tutu.

In Kliptown, learn about a youth program that offers tutoring and options to play sports and participate in the arts. Meet some of the youth and enjoy a performance by the children.

Check in to 54 on Bath in Johannesburg.

Day 13 | Hoedspruit | Kapama Private Game Reserve

Fly to Hoedspruit this morning. Upon arrival, transfer to Kapama Private Game Reserve.

Safari: Meet your ranger and tracker, a hard-working team that will accompany you on each game drive. Climb aboard your safari vehicle and get the lay of the African bushveld during your first game drive in Kapama Private Game Reserve. The quest begins as you try to spot the Big Five and enjoy encounters with Africa's untamed wildlife!

Day 14 | Kapama Private Game Reserve

Safari: It may seem quiet as the sun starts its journey across the sky, but there is plenty of animal activity to watch. Many animals are just waking up and preparing to search for breakfast. Others are winding down after a night on the prowl and looking for a place to sleep. As you journey through the stunning veld ecosystem, see how many of the Big Five you can spot today.

Free Time: Time at leisure allows you to enjoy the wellness center or settle in with a book.

Enrichment: *The Animals of Kapama.*

Tea is served before the afternoon drive.

Safari: Get a different perspective as you see diurnal animals settling down for the evening and nocturnal animals beginning theirs.

Africa's sunsets are unsurpassed! Toast to the day with a sundowner, a drink served at sunset.

Day 15 | Kapama Private Game Reserve

Safari: Every game drive is a unique experience forged by the time of day, the weather and the locale. Your tracker and

Rovos Rail—The Pride of Africa

Discover the glamorous Golden Age of train travel aboard the luxurious Rovos Rail. Revel in the incredible attention to detail and lavish offerings while riding in vintage carriages, restored to mint condition and impeccably appointed. Spend your days in the Observation Car or mingle with your fellow travelers in the lounge. On-board chefs prepare traditional dishes and regional specialties with only the finest of ingredients. Enjoy sumptuous breakfasts each morning and delicious three-course lunches and dinners, featuring fine South African wines.



Deluxe Suite with a double bed and a lounge area



Included Features



Accommodations (with baggage handling)

- **3 nights** in Cape Town, South Africa, at the Belmond Mount Nelson Hotel.
- **2 nights** at Victoria Falls, Zimbabwe, at The Victoria Falls Hotel.
- **4 nights** aboard Rovos Rail.
- **1 night** in Johannesburg at 54 on Bath.
- **3 nights** in Kapama Private Game Reserve at the Kapama River Lodge.




Transfers (with baggage handling)

- All transfers in the Land Program: flights, train journey and deluxe motor coaches.

Extensive Meal Program

- 13 breakfasts, 9 lunches and 8 dinners, including a Farewell Dinner; tea or coffee with all meals, plus wine with dinner.

Your One-of-a-Kind Journey


- **Visit 3 countries** during this program.
- **Small group:** Sized just right at 28 guests.
- **Enrichment by expert speakers** enhances your insight into the region.
- **Engaging excursions** showcase the local culture, heritage and history.
-  **Electives** and free time to pursue your individual interests.
-  **AHI Connects:** Local immersion.
- Welcome Reception to mingle with fellow travelers.
- A personal VOX headset to hear your English-speaking guide clearly.
- Tipping of Cape Town and Soweto excursion guides and drivers.
- Complimentary travel mementos.
-  **AHI Sustainability Promise:**
We strive to make a positive impact wherever we travel.

ranger are experts in finding creatures in the wild. They know the thickets where giraffes nibble at the treetops, the open veld where zebra graze and much more. Feel free to ask the guides questions about the animals. They are eager to share their passion with you!



Free Time: Take a dip in the pool, catch up with friends or relax in the sunshine, reveling in your wildlife sightings.


Safari: More game-viewing opportunities await! During this afternoon's safari, you may scout out popular watering holes, where four-legged and feathered residents gather. Celebrate your journey at a Farewell Dinner, a sumptuous meal seasoned with tales of your African adventure.

Days 16 & 17 | In Transit

All passengers depart for Hoedspruit airport, where the land program ends. AHI FlexAir passengers board flights to Johannesburg . Arrive in your gateway city.

Note: Itinerary may change due to local conditions.

 Flights and  transfers included for AHI FlexAir participants.

 Elective experiences available at an additional cost.

ACTIVE TRAVEL

This **Active Program** is designed for people who are in good health and can comfortably participate in a demanding daily schedule of physical activities. For more details, please call or visit our website.

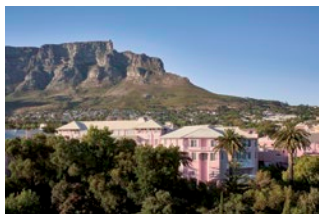
Excursions on this program require:

- walking on unpaved paths and/or uneven surfaces
- getting on/off motor coaches, boats and/or trains
- walking through train corridors whether the train is in motion or stopped
- climbing in and out of safari vehicles

Nelson Mandela mural, Soweto



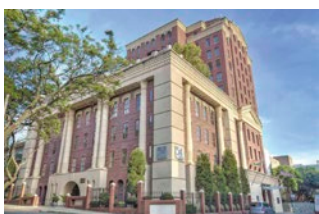
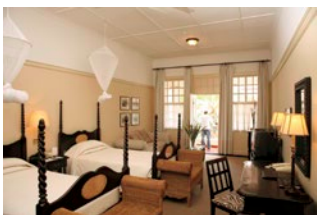
Accommodations



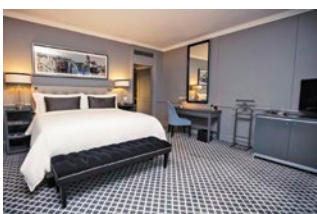
Belmond Mount Nelson Hotel | Cape Town



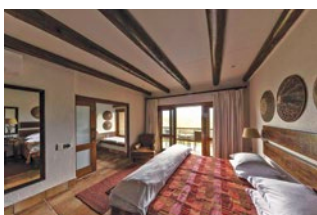
The Victoria Falls Hotel | Victoria Falls



54 on Bath | Johannesburg



Kapama River Lodge | Kapama Private Game Reserve



EXTEND YOUR STAY



Cape Town | 2 Nights

{ Elective PRE-Trip Extension at an additional cost }

Enjoy two extra nights in vibrant Cape Town with a stay at the deluxe Belmond Mount Nelson Hotel. This exciting extension features a full-day tour of the Cape Winelands. Visit a premier wine estate for a wine tasting followed by lunch. Continue to Stellenbosch and Franschhoek, two delightful and historic towns in South Africa's wine country.

\$1,295 per person, double occupancy | \$1,990 single occupancy

Reserve your trip today!

To book your journey,
please call our AHI Travel Experts
at **833-303-1333** or
visit **michst.ahitravel.com**.

Program Dates

Travel dates †

January 5-21, 2025

† Travel dates include any overnights required for international travel. These dates may vary depending on air schedules.

Tour dates*

January 7-20, 2025

* Tour dates begin on the scheduled arrival date at your destination and end on the scheduled departure date from your destination.

Land Program

Category	Full Price	Early Booking Special Price*
B-Pullman Suite (76 sq. ft.)	\$8,945	\$8,195
A-Deluxe Suite (106 sq. ft.)	\$10,245	\$9,495

Early Booking Special Price includes \$750 special savings.

*Early Booking Special Price valid if booked by date on address panel and paid in full at booking. If you pay only your deposit by early booking date, you still save \$250 per person.

VAT is an additional \$495 per person.

All prices quoted are in USD, per person, based on double occupancy and do not include air transportation costs (unless otherwise stated). Special offers, promotions and discounts cannot be combined.

The Pullman Suite single supplement is an additional \$3,295.

The Deluxe Suite single supplement is an additional \$4,795.

There is a limited availability for all single accommodations.

Please note: Program-specific terms and conditions are available at <https://michst.ahitravel.com/destinations/1893A?schoold=100>. You can also request a copy from our travel experts. Any payment to AHI Travel constitutes your acceptance of the terms and conditions set out therein, including but not limited to the cancellation terms.

AHI FlexAir

Let us arrange your flights

Our experts are ready to assist you in booking flights. Our personalized air program offers the following advantages:

- **price guarantee** to protect you from fuel surcharge increases after ticket purchase
- arrival and departure **transfers** on group dates
- **flexibility** to change or cancel your reservation before departure on most flights (Fees may apply).
- **assistance** in the event of schedule changes or delays

Life on Safari

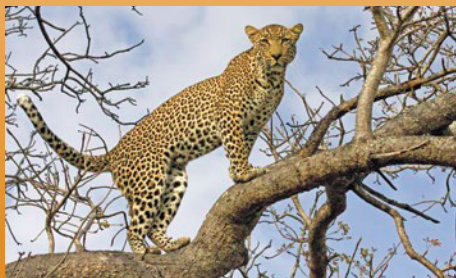
This luxury safari features stays in three outstanding wildlife parks. Each day on safari is filled with amazing discoveries, profound learning opportunities and a renewed respect for nature.

With an expert tracker leading the way, scout exotic animals in their natural habitats and witness their dramatic day-to-day struggle for survival. Thrill to up-close encounters with lions lazing in the sun, elephants bathing in rivers and other majestic beasts roaming the savannah, from giraffes, zebras, hippos and baboons to various bird species and reptiles.



The Big Five

Seize the opportunity to see the Big Five! This majestic group of animals includes (pictured clockwise) elephant, rhino, leopard, Cape buffalo and lion (pictured on cover).



AHI Travel Expertise



From your reservation to your return home, we are here to ensure you have the adventure of a lifetime.

Before you go:

Travel Consultants stand ready to answer your questions as they guide you through the reservation process.

Travel & Air Coordinators each offer their personalized assistance with flights, electives and special requests.

Travel Information provides pre-departure details and enrichment about your destination.

Once you arrive:

Your Travel Director, a seasoned, multilingual professional, manages daily logistics so you enjoy a seamless experience.

Handpicked Expert Guides offer fascinating insights and share their passion for their country with you.

Knowledgeable Lecturers deepen your appreciation for the region and its history, culture and current events.



Castle of Good Hope, Cape Town



MSU Alumni Office
535 Chestnut Road
Room 300
East Lansing, MI 48824

SAFRICA25 4

833-303-1333
michst.ahitravel.com



Enjoy safaris, a luxury train journey, Cape Town and more!

AHI Travel's mission is to deliver inspirational, educational and cultural programs that delight travelers.

With AHI you can rely on:

- Experienced Travel Directors who attend to every detail of your journey.
- An exceptional travel value.
- Unique access to local sites.
- Flexibility and customization.
- Safety and security.



Please call or refer to our website for the most current program information, discounts and pricing.

Presorted Std.
U.S. Postage
Paid
AHI Travel