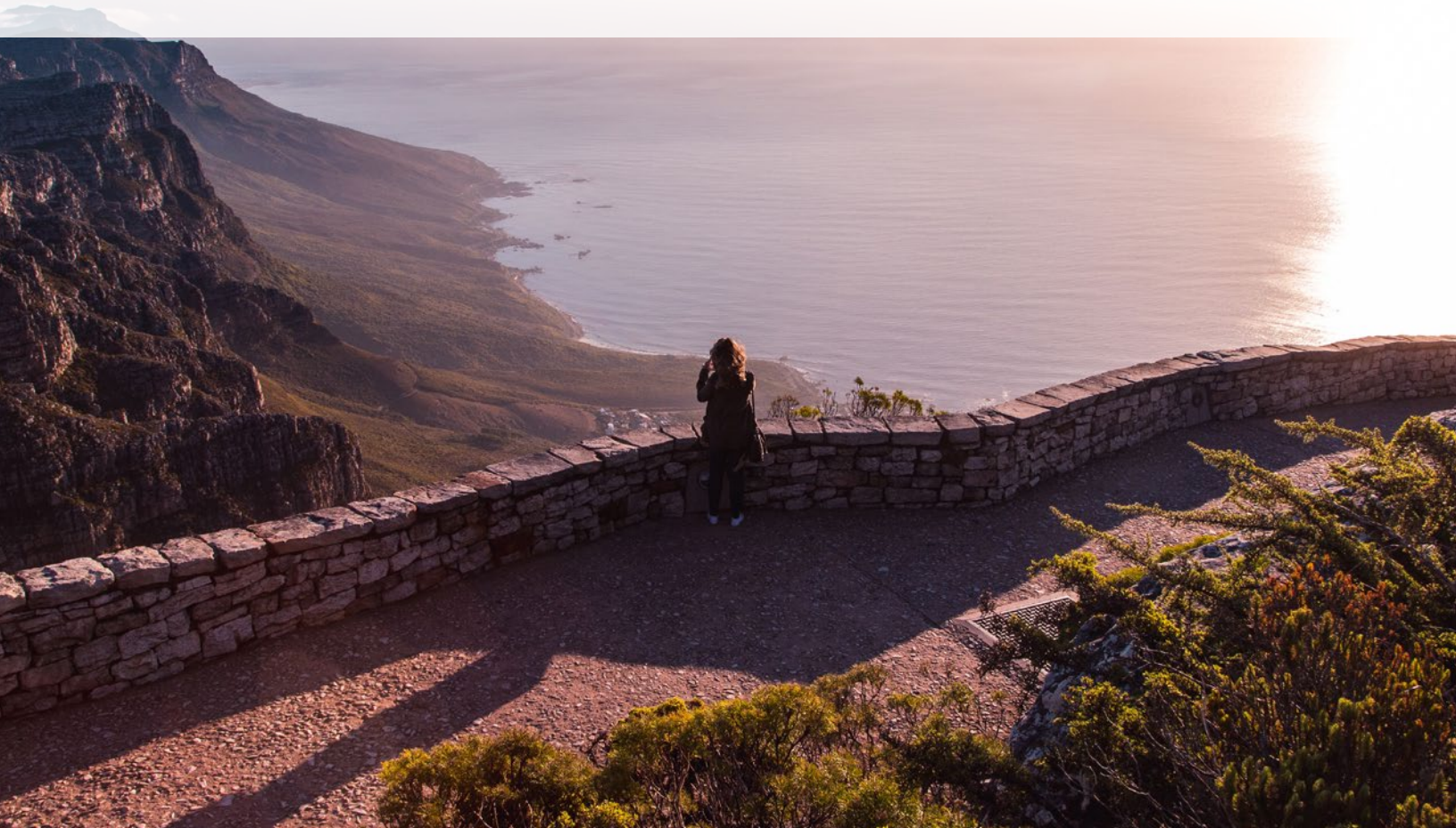




SPARTAN
PATHWAYS TRAVEL
MICHIGAN STATE UNIVERSITY ALUMNI

SOUTH AFRICA EXPLORER

2025 YOUNG ALUMNI JOURNEY



US DEPARTURE DATE: **OCTOBER 10, 2025**

LAND TOUR START DATE: **OCTOBER 11, 2025**

RETURN DATE: **OCTOBER 19, 2025**

ARRIVE US DATE: **OCTOBER 20, 2025**

LAND PACKAGE FROM: \$4,875

Visit our website www.aesu.com/msu for more details and to book.

START YOUR ADVENTURE

Dear Young Alumni and Friends!

Can you think of a better way to travel than with fellow Michigan State young alumni?

The Michigan State Alumni Office young alumni travel program, designed for recent grads ages 22 – 35, offers you this opportunity by bringing you together with individuals in the same age range, with similar backgrounds and experiences, while enriching you on well-designed, hassle-free tours of the world.

These programs provide social, cultural, and recreational activities and many opportunities for learning enrichment and enjoying a connection back to MSU. Our journeys are of great quality and value, operated by a travel company with over 48 years of experience in the young travel market.

In this brochure you will find a detailed itinerary, travel dates and pricing.

If you have any questions about this tour, please contact our tour operator, AESU Alumni World Travel, by calling 800-638-7640 or email alumni@aesu.com.

To make an online booking, please visit our young alumni tour landing page www.aesu.com/msu and select this tour to be directed to the tour web site.

We are looking forward to traveling with you this coming season.

Sincerely,



Regina Cross
Director, Spartan Pathways Travel Program
MSU Alumni Office

Travel insurance is compulsory. The MSU Alumni Office offers travel insurance. Please visit this website for information or to purchase insurance: <https://my.travelinsure.com/spartans>

“ NOT ONLY WAS THIS AN AMAZING TRIP, IT WAS A WAKE UP CALL TO SEE THE WORLD. ”

FORMER TRAVELER



SOUTH AFRICA EXPLORER

11 DAY TOUR OF SOUTH AFRICA FOR OUTDOOR AND ADVENTURE TRAVELERS

PLACES VISITED

CAPE TOWN

KRUGER NATIONAL PARK

JOHANNESBURG



PROGRAM ACCOMMODATIONS

This trip has been carefully designed to feature these fantastic inclusions and highlights:



For a glossary of these experiences, visit:

www.aesu.com/aspects-awt



ACTIVITY LEVEL: ACTIVE

For more details, please visit:

<https://www.aesu.com/activity-levels-awt/>

WHAT'S INCLUDED?

11-Day Land Package Transportation and Lodging

- 8 nights in superior tourist class hotels or better, 2-share rooms with private bath/shower
- Flight from Hoedspruit/Kruger to Cape Town
- All ground transportation by private, air-conditioned motor coach
- Arrival and departure airport transfers included with purchased AESU group airfare

Meals

- 20 meals: 8 full English breakfasts, 6 lunches | 6 speciality dinners

Activities & Admissions

- Johannesburg orientation tour
- Soweto Township
- Apartheid Museum
- Hector Pieterse Memorial
- Nelson Mandela House
- Makalali Private Game Reserve (or similar)
- Greater Kruger National Park

- Daily morning & afternoon game drives at Greater Kruger Park
- Bush country fauna & flora
- Lodge activities and pool
- Panorama Route
- Blyde River Canyon Reserve
- Bourke's Luck Potholes
- God's Window
- Cape Town orientation tour
- Welcome orientation and 14-dish taste safari dinner and drumming session
- Chapman's Peak
- Cape Point National Park
- Flying Dutchman funicular
- Boulders Beach Penguin Colony
- Table Mountain
- Stellenbosch Wine Country & Tastings

Optional Excursions

(not included in land package price):

- Johannesburg – Specialty dinner and gin tasting experience



SOUTH AFRICA EXPLORER ITINERARY

About the Trip!

In the lower portion of the vast African continent lies South Africa, a fascinating and diverse country famous for its wildlife, such as the lions of Greater Kruger National Park, and the unique fauna, flora and coastal penguins of the Cape Peninsula. South Africa has coastlines with endless beaches on both the Indian and Atlantic Oceans. The friendly locals count eleven official languages, including Zulu, Afrikaans, English, and Xhosa and the cosmopolitan cities of Johannesburg and Cape Town are bustling with excitement. Get ready for the adventure-of-a-lifetime!

Embark on an epic adventure tailored for adventure seekers. Our journey starts in Johannesburg, where vibrant city life meets the pulse of South Africa's history. Then, we head to Kruger National Park, where you will come face to face with the majestic Big 5 on thrilling safaris. We cap off your adventure in Cape Town, a city where the breathtaking Table Mountain frames a landscape of endless outdoor activities and vibrant nightlife. This is a dream trip, filled with adventure, culture, and unforgettable memories waiting to be made.

- **DAY 1 FLIGHT TO JOHANNESBURG, SOUTH AFRICA**
Our adventure begins with an overnight flight to Johannesburg, the City of Gold, and one of Africa's most vibrant metropolises. "Moenie worry nie" – relax and enjoy.
Meals: In-flight
- **DAY 2 LAND TOUR START DAY: JOHANNESBURG**
Welcome to Johannesburg, the economic capital of Africa and the gateway to Southern Africa with a multicultural mixture of traditional architecture and ultra-modern skyscrapers, old-style medicine shops, Chinese restaurants and colorful markets, all competing for your attention. Tonight, join us for a welcome orientation and a South African Boma welcome dinner with a cultural dance show.
Meals: In-flight | Dinner | Water bottle
Inclusions: Transfer from airport to hotel included with purchased AESU group airfare | Welcome orientation | Boma welcome dinner at Lesedi Cultural Village



DAY 3 JOHANNESBURG

This morning we'll make a visit to Soweto, the township about 30 minutes west of the heart of Johannesburg. The best way to experience the true and modern face of Soweto is to visit with a local. Home to more than one million people, Soweto is the only place in the world where two Nobel Peace Prize-winners once lived on the same street (Nelson Mandela and Bishop Desmond Tutu) and, of course, it is where the Soweto Uprising of 1976 occurred. See the Apartheid Museum, the Hector Pieterse Memorial, and the Nelson Mandela House during our visit. Lunch will be at a lively restaurant in the area. Back in Johannesburg this evening, we invite you to join an optional fine dining and gin tasting experience.

Meals: Breakfast | Lunch | Water bottle

Inclusions: Soweto Township | Apartheid Museum | Hector Pieterse Memorial | Nelson Mandela House

Optional activities: Specialty dining and gin tasting experience

DAY 4 JOHANNESBURG TO MAKALALI PRIVATE GAME RESERVE VIA THE PANORAMA ROUTE

After breakfast, we set out on a captivating journey from Johannesburg to Greater Kruger National Park via the famed Panorama Route. Though it's a long day, the spectacular sights along the way make it well worth it. We begin by ascending to the Drakensberg escarpment in Mpumalanga, reaching an impressive altitude of 6000 feet. There, we'll witness the breathtaking God's Window, offering panoramic views of lush mountains, canyons, unique rock formations, baobab trees, and stunning waterfalls.

Our adventure continues with a visit to the Blyde River Canyon Reserve, the world's third-largest canyon. It's a visual feast with its captivating landscapes and iconic attractions like Bourke's Luck Potholes. Finally, we reach the Makalali Private Game Reserve (or similar) within the Greater Kruger National Park's conservation area. This renowned destination offers exceptional game viewing, including the Big 5, amidst the diverse African bush. Enjoy a welcome cocktail with Amarula, a South African specialty liqueur. Your culinary experiences will be as diverse as the wildlife, with daily lodge lunches, afternoon tea and options for dinners in the bushveld or 'boma dinners' under the stars. Enjoy a blend of regional African cuisine that represents the continent's rich cooking styles.

Meals: Breakfast | Welcome cocktail with Amarula | Lunch | Afternoon tea | Dinner | Water bottle

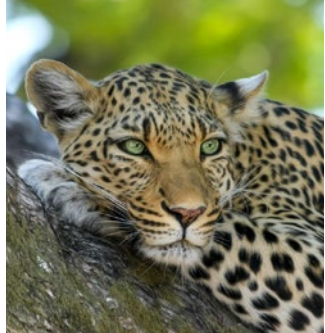
Inclusions: Panorama Route | Blyde River Canyon Reserve | Bourke's Luck Potholes | God's Window | Makalali Private Game Reserve (or similar) | Greater Kruger National Park | Afternoon Game Drive | Bush country fauna & flora

DAY 5 MAKALALI PRIVATE GAME RESERVE – GREATER KRUGER NATIONAL PARK

Join the park rangers for more exciting morning and afternoon game drives in open 4 x 4 vehicles and talks about wildlife conservation efforts. While the animals are taking their siesta, we'll enjoy lunch back at the lodge on the expansive deck. Each day at the lodge you may choose to go on all the game drives (or not), participate in other activities like bush walks, or just lounge by the lodge pool for some quality down time. After fantastic discoveries in the bush with our outstanding guides and trackers, we compare notes and photos at dinner and make plans for another exciting day. Walking Safaris and Night Drives can be organized on request. All rangers are educated in astronomy and will unveil the secrets of the African night sky in star gazing sessions.

Meals: Breakfast | Lunch | Afternoon tea | Dinner

Inclusions: Morning & afternoon Game Drives | Bush country fauna & flora | Lodge activities and pool



DAY 6 **MAKALALI PRIVATE GAME RESERVE - GREATER KRUGER NATIONAL PARK**

Morning and afternoon game drives will be offered again today. Explore more of the bush wilderness and terrain that houses not only the famous Big Five, but also cheetahs, giraffes, zebras and a vast variety of antelopes and other species. There are also hundreds of species of native birds that can be closely observed in their natural environment among ancient indigenous trees and meandering rivers. You will be in awe at the incredible diversity these game reserves offer, especially around the many watering holes. After another unforgettable sunset, the evening is at leisure after enjoying our last dinner at the lodge together.

Meals: Breakfast | Lunch | Afternoon tea | Dinner

Inclusions: Morning & afternoon Game Drives | Bush country fauna & flora | Lodge activities and pool

DAY 7 **MAKALALI PRIVATE GAME RESERVE – FLIGHT TO CAPE TOWN**

After breakfast, we transfer to the airport for our flight from Hoedspruit Airport to Cape Town. After arrival, we transfer to our hotel, then enjoy a brief orientation tour of the city with its fascinating blend of African, European, and Malay influences in the culture and architecture. Cape Town has it all, from rugged mountains to the crashing surf of the Atlantic and Indian Oceans on stunning beaches. The remainder of the afternoon is yours to relax or explore, the lively waterfront areas and beachfront “Riviera” neighborhoods with a seemingly endless array of diversions to choose from. Tonight, join us for a welcome to Cape Town dining experience.

Meals: Breakfast | Dinner | Water bottle

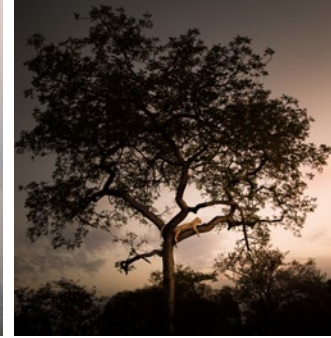
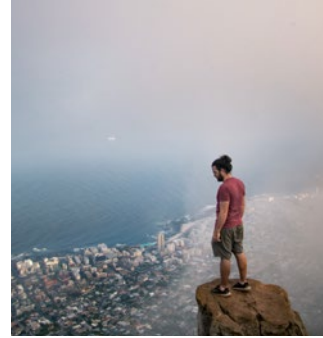
Inclusions: Flight to Cape Town | Brief orientation tour of Cape Town

DAY 8 **CAPE TOWN**

Today we take a scenic drive past cape vineyards and along the cliffs of Chapman’s Peak leading down to the most Southwestern point of Africa - Cape Point National Park. Here we board the Flying Dutchman funicular that whisks us up to the summit of Cape Point to uninterrupted panoramic views across the Atlantic and over the bay to the historic lighthouse. Cape Town’s funicular was named after the legendary 17th century ghost ship that met its end at the “Cape of Storms” on its way back to Holland from Jakarta. After our lunch of local seafood with more stunning seaside views, we’ll visit the Boulders Beach Penguin Colony. This is home to coastal seals and flocks of penguins that waddle up and down the beach. As you walk along the boardwalk, you’ll be able to see their nests in the sand. An evening back in Cape Town is at your leisure where you’ll have no trouble finding some dining options in this city known for its amazing food scene and laid-back lifestyle.

Meals: Breakfast | Lunch | Water bottle

Inclusions: Chapman’s Peak | Cape Point National Park | Flying Dutchman funicular | Boulders Beach Penguin Colony



● **DAY 9 CAPE TOWN**

Our local expert first takes us on a cable car ride to the top of Table Mountain, the most iconic landmark of South Africa (weather permitting). This flat-top mountain curls around the city and looks out over the ocean—a selfie-background paradise no matter which way you look. There are about 2,200 species of plants found on Table Mountain and 1,470 exotic floral species. Next, we travel east to the heart of wine country and the historic former Dutch settlement and university town, Stellenbosch. Surrounded by more than 150 wine farms and estates, the town is humming with shops, cafés, restaurants, boutiques, art galleries and museums. We'll enjoy visits to two wineries to taste the fruit of the vine. Enjoy a lunch of locally grown ingredients, sample award-winning wines, each with its own unique charm, while relaxing and drinking in the intoxicating atmosphere of the winelands. Tonight, feel the heartbeat of Africa at our special farewell dinner. This immersive experience will take us on a 14-dish taste safari paired with traditional Mali puppetry, singing, and dancing to the rhythms of the marimba percussion and djembe drums.

Meals: Breakfast | Lunch | Dinner | Water bottle

Inclusion: Table Mountain | Stellenbosch Wine Country and Tastings | 14-dish taste farewell safari dinner and drumming session

● **DAY 10 CAPE TOWN - TRAVEL HOME**

After breakfast, we bid farewell to new friends, and begin to plan our next big adventure.

Meals: Breakfast | In-flight

Inclusions: Transfer from hotel to airport included with purchase of AESU group airfare

● **DAY 11 ARRIVE US**

TOUR DIRECTORS

Your land package tour includes the services of a professional tour director, who knows this is a trip of a lifetime for you. They are young professionals; multi-lingual and carefully selected graduates from major universities. They are eager to show you the world through the eyes of an adventurer, sharing with you their vast knowledge, as well as interesting little-known facts.

Our qualified tour directors and staff of local experts mean a trouble-free journey with the added security of group travel. We are very proud of our tour directors, therefore it is customary to include gratuity.

Show the tour director and driver your appreciation with a tip. We suggest \$6-7 per person/per day for your tour director and \$4 per person/per day for your driver.

HOTELS

We stay in superior tourist-class hotels or better, all with private bath/shower in 2-share rooms.

Our hotels have been specially selected for their local atmosphere, friendly hospitality, and cleanliness. Our stay at Greater Kruger National Park will be at lodges.

All land package rates are based on two people sharing a room. You can book a single-room by paying an additional single supplement of \$975. The total single tour package for the 11 day trip is \$5,850.

If you are a solo traveler and don't want to pay the single supplement, AESU will attempt to arrange a share with a same-gender traveler. If we are unable to arrange a share, the single supplement will be added to your invoice.

By booking your trip with AESU, you are agreeing to all the terms and conditions as outlined on our website: <https://www.aesu.com/terms-conditions-awt/> | For details on our payment plan, please visit: <https://www.aesu.com/payment-plan-awt/>

University Disclaimer

Michigan State University Alumni Office Disclaimer Spartan Pathways Travel Program:

The Michigan State University Alumni Office (the MSU Alumni Office or MSUAO) and the Spartan Pathways Travel Program is not the Tour Operator. The MSUAO is not responsible for the changes of flight times, fare changes, dishonor of airline, hotel or motor coach transportation and car rental reservations, delays, losses, injuries, inconveniences, cessation of operations, airline or tour operator bankruptcies, acts of God, or any other event beyond our control.

The MSUAO acts only as a sponsor with respect to the travel services, and it shall not be responsible for changes to flight times, fare changes, dishonor of airline, hotel or other reservations, injury, damage, loss of baggage, accidents or for the acts or defaults of any person or entity engaged in providing services to participants or in carrying out other arrangements of the tour.

Further, the MSUAO shall not be responsible for losses or additional expenses of the participant due to sickness, weather, strike, civil unrest, acts of terrorism, pandemic, epidemic, quarantine, acts of God, governmental intervention, or other causes beyond its control. The MSUAO shall not be responsible for alteration in the itinerary as deemed necessary for carrying out the tour and the Tour Operator may substitute hotels of similar quality. The Tour Operator may postpone or cancel any tour prior to departure.

The MSUAO or the Tour Operator may decline to accept or to retain any person as a member of the tour should such person's physical or mental health, actions or general deportment impede the operation of the tour or the rights or welfare of the other participants. No refund will be made for the unused portion of any tour. By embarking upon travel, the participant voluntarily assumes all risk involved in such travel, whether expected or unexpected.

Participant is hereby warned of the above risks as well as possible travel industry force majeure, bankruptcies and medical and climatic disruptions, and the possibility participant may be unable to travel as scheduled because of personal emergency. Participant is advised to consider obtaining appropriate insurance coverage against these risks. Applicants for participation on this tour accept in full all the conditions set forth above.

The MSUAO partners with other universities and alumni from other universities will be on many departures. While some of the Spartan Pathway's tours are exclusive to just MSU alumni, on many of the tours we partner with other universities/organizations that have travel programs. Space allotments for these tours are given to each university and after a guaranteed time allotted for reservations, available space is opened to all universities/organizations. Therefore, some departures may have universities with greater numbers of alumni on the tour than MSU.