



SPARTAN  
PATHWAYS TRAVEL  
MICHIGAN STATE UNIVERSITY ALUMNI

SEPTEMBER 7-12, 2024

# Northern and the Wildlife of Northern Manitoba *Lights*

**BOOK WITH  
CONFIDENCE**

30-day refund  
guarantee

Experience authentic Canadian hospitality  
at a genuine fly-in wilderness lodge



Dear Spartans,

Venture with us into the vast Canadian North—a remote tundra teeming with glacial landforms, boreal forest, and beautiful wilderness—accessible only by plane or boat. The destination: a supremely outfitted lodge that will be home base amidst days filled with wildlife spotting and outdoor adventures, and evenings featuring delicious dinners followed by opportunities to watch for the northern lights. Northern Manitoba is considered to be one of the best places in the world to view this phenomenon, and fall is considered the best time to comfortably view the aurora borealis and to experience the other wonders of this extraordinary region.

Discover the uniqueness of the area during guided interpretive tours focusing on wildlife, botany, and geography, and learn about local plant life the First Nations Peoples used for food sources and medicines.

At the lodge, take advantage of leisure activities like hiking, fishing, and kayaking or canoeing, or join optional excursions to further explore the area.


Space is limited. With significant savings of more than \$1,000 per couple, we anticipate this tour will fill quickly, so be certain to reserve your spot today and share this brochure with family and friends who may be interested in traveling with you.

Please reserve online at [msu.orbridge.com](http://msu.orbridge.com), by calling (866) 639-0079 or by returning the enclosed reservation form.

Go Green,

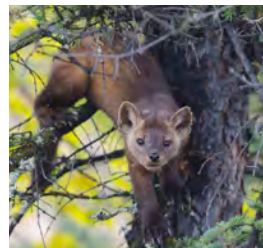
Regina Cross  
Director, Spartan Pathways Travel Program  
MSU Alumni Office  
(888) 697-2863

---

 Orbridge takes seriously the responsibility to minimize our global environmental impact. Each year we plant 100,000 trees in U.S. State Forests with afforestation needs as an ongoing initiative among our evolving sustainability efforts. Learn more at [orbridge.com/going-green](http://orbridge.com/going-green).







## Your 6-Day Itinerary (subject to change)

**Day 1:** Arrive in Winnipeg, Manitoba, Canada  
 Afternoon / evening at leisure, welcome beverage  
 Overnight: The Grand Winnipeg Airport Hotel

**Day 2:** Winnipeg / Flight to Gangler's North Seal River Lodge / Eskers Tour / Northern Lights Viewing (B,L,D)  
 Lunch and property introduction, eskers and erratics tour and wildlife viewing, optional outdoor activities, aurora viewing  
 Overnight: Gangler's North Seal River Lodge

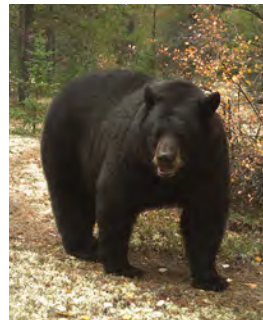
**Day 3:** Gangler's Lodge / Wildlife Excursion / Northern Lights Viewing (B,L,D)  
 Guided wildlife and area tour, Canadian Shore Lunch, outdoor activities, photography workshop, aurora viewing  
 Overnight: Gangler's North Seal River Lodge

**Day 4:** Gangler's Lodge / Caribou Spotting / Northern Lights Viewing (B,L,D)  
 Caribou migration floatplane excursion, ecosystems lecture, aurora viewing  
 Overnight: Gangler's North Seal River Lodge

**Day 5:** Gangler's Lodge / Outdoor Activities / Optional Activities / Northern Lights Viewing (B,L,D)  
 Choose from hiking, fishing, fishing, guided eskers tour, lake tour, birding, boating, and others, farewell dinner, aurora viewing  
 Overnight: Gangler's North Seal River Lodge

**Day 6:** Gangler's Lodge / Flight to Winnipeg / Depart for U.S. (B)

(B=Breakfast, L=Lunch, D=Dinner)



**Activity Level:** To fully enjoy and participate in all aspects of this program, guests should be able to stand for 90 minutes at a time without sitting, walk a moderate-paced mile on uneven terrain without difficulty, and enter/exit skiffs with little trouble. Activities take place outdoors in the wilderness with no access to toilet or other amenities.

**NOTE:** The itinerary is a general listing of activities and excursions that may happen during any part of the program. Daily activities will be determined by weather, opportunities to view wildlife, and other various elements that make up the incredibly diverse landscape. While chosen locations are favorable for witnessing the magic of the Northern Lights, we cannot guarantee their appearance. Many factors affect the visibility of this naturally occurring phenomenon.



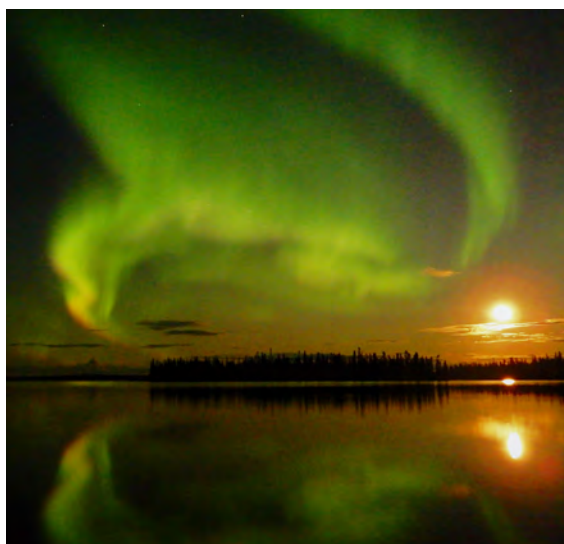


## Program Highlights

- Experience true Canadian hospitality at Gangler's North Seal River Lodge in Northern Manitoba—an exclusive property renowned for its extraordinary service—situated approximately 200 miles from the nearest road and accessible only by air.
- Relish pristine viewing of the northern lights in September that will leave you breathless. Northern Manitoba is considered to be one of the best places in the world to view the aurora borealis.
- Set out on a full-day wildlife spotting excursion (by air and by land) during the annual caribou migration—where wolves, bears, bald and golden eagles, wolverines, and scavengers follow this traveling ecosystem.
- Admire the geologically rare landscape sculpted thousands of years ago by retreating glaciers that left meandering formations of gravel and sand called eskers.
- At the lodge, choose from a variety of outdoor activities including hiking, biking, birding, lake tours, and fishing.
- Enjoy guided tours and lectures led by local naturalists—including resident biologist, Dr. Brian Kotak, and First Nations guides—specializing in the region's geology, geography, flora and fauna, and indigenous communities.
- Participate in educational presentations covering diverse subjects of regional interest.

## What's Included

- 1 night hotel accommodations in Winnipeg and 4 nights accommodations at Gangler's North Seal River Lodge
- Round-trip airfare between Winnipeg and Gangler's North Seal River Lodge
- 5 breakfasts, 4 lunches, and 4 dinners
- Full guiding services of an Orbridge Expedition Leader and local expert guides
- All activities listed on the 6-day itinerary (unless noted otherwise)
- All excursion transportation
- Gratuities to Orbridge Expedition Leader, local guides, drivers, and wait staff for included meals
- Airport transfers for guests arriving and departing during the suggested times

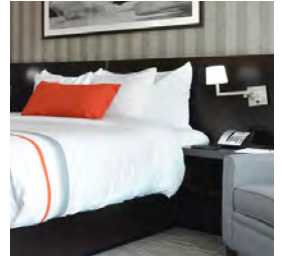




## Your Accommodations (subject to change)

### THE GRAND WINNIPEG AIRPORT HOTEL

Located next to the Winnipeg airport terminal, this boutique property provides beautifully-appointed accommodations and thoughtful amenities. The hotel's restaurant, Blue Marble, uses locally produced ingredients to create an unforgettable dining experience.



### GANGLER'S NORTH SEAL RIVER LODGE

Over 30 years ago, the Gangler family relocated from Chicago to Northern Manitoba to pursue their dream of building and operating a sport fishing camp. Today, Gangler's North Seal River Lodge is recognized as a premier destination and is much more than just a fishing camp. The area is an ideal playground for endless outdoor activities including kayaking, canoeing, mountain biking, and certainly wildlife spotting.

Time at the lodge is designed to be an exclusive experience—as it hosts a maximum of just 28 guests. Visitors are guaranteed warm, personalized service and sincere attention to detail by the Gangler staff.

Lodge amenities include a restaurant with full-service cash bar open during meal times, lounge area with ping-pong and pool table, tackle store and complimentary fly-tying table, complimentary video library, complimentary Wi-Fi, and satellite telephone and fax machine (additional fees apply).

**Classic Cabin:** One bedroom, two twin beds, dresser, nightstand, private en suite bathroom (with soap, shampoo, and hair dryer), and separate living area.

**Deluxe Cabin:** Two bedrooms each with two twin beds, dresser, nightstand, and private en suite bathroom (with soap, shampoo, and hair dryer), and a larger shared living area.

Cabin amenities include individual climate control, full carpeting, screened-in porch with chairs, couch, coffee table and chairs, TV with VCR/DVD player, coffee maker, and closet.





# Northern Lights

SEPTEMBER 7-12, 2024

## Reserve by Credit Card:

Online: [msu.orbridge.com](http://msu.orbridge.com)

Phone: (866) 639-0079

Fax: (206) 452-5655

## Reserve by Check:

Made payable to **Orbridge, LLC**

Mail to: Orbridge, P.O. Box 1376

Poulsbo, WA 98370

We strongly suggest purchasing travel insurance. Travel insurance information will be sent to you with your email confirmation from the MSU Alumni Office. For more information, contact Orbridge at (866) 639-0079 or you may call the MSU Alumni Office at (888) 697-2863.

## GUEST INFORMATION:

Guest #1 Name (Title/Salutation): \_\_\_\_\_

Email: \_\_\_\_\_ Class Year: \_\_\_\_\_

Home Phone: \_\_\_\_\_ Alt. Phone: \_\_\_\_\_

Address: \_\_\_\_\_

City: \_\_\_\_\_ State: \_\_\_\_\_ Zip: \_\_\_\_\_

Guest #2 Name (Title/Salutation): \_\_\_\_\_

Email: \_\_\_\_\_ Class Year: \_\_\_\_\_

Home Phone: \_\_\_\_\_ Alt. Phone: \_\_\_\_\_

## DEPOSIT PAYMENT:

Check  ACH (Automated Clearing House)  MasterCard/Visa  American Express  Discover

Card #: \_\_\_\_\_ Exp. Date: \_\_\_\_\_ CVV: \_\_\_\_\_

Name (as printed on card): \_\_\_\_\_

Billing Address (if different from above): \_\_\_\_\_

City: \_\_\_\_\_ State: \_\_\_\_\_ Zip: \_\_\_\_\_

## CATEGORY SELECTION & DEPOSIT:

Cabin Category (choose one):  Classic (Double)  Classic (Single) /  Deluxe (Double)  3rd Guest  4th Guest

# \_\_\_\_\_ guests joining program (\$850/person) + = **TOTAL DEPOSIT: \$** \_\_\_\_\_

**OPTIONAL BLACKFISH LAKE FLYOUT / ROBERSTON ESKER / ARCHAEOLOGICAL TOUR** (added to your final invoice):

# \_\_\_\_\_ guests joining optional excursion (\$350/person)

I/we have read, understand, and agree to the full Terms & Conditions at [terms.orbridge.com](http://terms.orbridge.com); and I/we agree that Orbridge, LLC is authorized to charge my credit card above and/or take my/our deposit for this program.

Signature: \_\_\_\_\_ Date: \_\_\_\_\_

**Reservations, Deposits and Final Payment.** To secure your reservation, deposits are due upon placing a reservation as follows: \$850 per person per program and \$500 per person for any pre/post-tour. Orbridge accepts payment by check, ACH, wire or major credit card. Final payment is due 90 days prior to the departure date. Reservations made after the final payment due date are due at the time of registration. If final payment is not received by Orbridge by the final payment due date, Orbridge may cancel your reservation in its sole discretion with no right of refund. CST#2098750-40 WST#602828994

**Reservation Grace Period.** Reservations made 121+ days prior to the departure date may be cancelled within 30 days from the reservation date ("Grace Period") for a full refund. Notice of cancellation must be received in writing during the Grace Period. The date of receipt will be used for the effective date.

**Reservation Cancellations and Refunds.** Notice of cancellation must be submitted to Orbridge in writing. The date of receipt will be used for the effective date. If the cancellation notice is received after the Grace Period (if applicable): (a) 91+ days prior to the departure date, all monies paid will be refunded less an administrative fee of \$350 per person for the main program and \$200 per person for a pre/post-tour; (b) 90-76 days prior to the departure date, a 25% cancellation fee for the full cost of the program and the balance will be refunded; (c) 75-61 days prior to the departure date, a 50% cancellation fee for the full cost of the program and the balance will be refunded; (d) 60-46 days prior to the departure date, a 75% cancellation fee for the full cost of the program and the balance will be refunded; (e) within 45 days prior to the departure date, a 100% cancellation fee for the full cost of the program. A 100% cancellation fee applies to all non-refundable airfare. Refunds, if any, will be processed within 30 days of our receipt of your written notice.

For complete Terms & Conditions, visit [terms.orbridge.com](http://terms.orbridge.com) | Copyright © 2023 Orbridge, LLC | [orbridge.com](http://orbridge.com) | (866) 639-0079

\*Special group rate; limited offer. Rate is per person based on double occupancy except where noted as Single, in U.S. dollars. Single availability limited. Group airfare for the charter flight between Winnipeg and Gangler's North Seal River Lodge is included. Airfare otherwise not included. \*\*A complement to the educational component of this journey, Expedition Libraries are curated collections of reading and resources tailored to this program. Place your deposit on or before the specified date, and one Expedition Library per household will be sent after receipt of final payment. Libraries may be purchased; please call for details.



Category	Standard Rate	Special Rate*
Classic Cabin - Double	<del>\$8,199</del>	\$7,695
Classic Cabin - Single	<del>\$12,499</del>	\$11,995
Deluxe Cabin - Double	<del>\$9,499</del>	\$8,995
Deluxe Cabin - 3rd Guest	<del>\$7,299</del>	\$6,795
Deluxe Cabin - 4th Guest	<del>\$6,699</del>	\$6,195



# Northern Lights

SEPTEMBER 7-12, 2024

Special Alumni Rate: **Save more than \$1,000** per couple

Michigan State University Alumni Office Spartan Pathways Disclaimer:

The Michigan State University Alumni Office (the MSU Alumni Office or MSUAO) and the Spartan Pathways Travel Program is not the Tour Operator. The MSUAO is not responsible for the changes of flight times, fare changes, dishonor of airline, hotel or motor coach transportation and car rental reservations, delays, losses, injuries, inconveniences, cessation of operations, airline or tour operator bankruptcies, acts of God, or any other event beyond our control. The MSUAO acts only as a sponsor with respect to the travel services, and it shall not be responsible for changes to flight times; fare changes, dishonor of airline, hotel or other reservations; injury, damage, loss of baggage, accidents or for the acts or defaults of any person or entity engaged in providing services to participants or in carrying out other arrangements of the tour. Further, the MSUAO shall not be responsible for losses or additional expenses of the participant due to sickness, weather, strike, civil unrest, acts of terrorism, pandemic, epidemic, quarantine, acts of God, governmental intervention, or other causes beyond its control. The MSUAO shall not be responsible for alteration in the itinerary as deemed necessary for carrying out the tour and the Tour Operator may substitute hotels of similar quality. The Tour Operator may postpone or cancel any tour prior to departure. The MSUAO or the Tour Operator may decline to accept or to retain any person as a member of the tour should such person's physical or mental health, actions or general deportment impede the operation of the tour or the rights or welfare of the other participants. No refund will be made for the unused portion of any tour. By embarking upon travel, the participant voluntarily assumes all risk involved in such travel, whether expected or unexpected. Participant is hereby warned of the above risks as well as possible travel industry force majeure, bankruptcies and medical and climatic disruptions, and the possibility participant may be unable to travel as scheduled because of personal emergency. Participant is advised to consider obtaining appropriate insurance coverage against these risks. Applicants for participation on this tour accept in full all the conditions set forth above. The MSUAO partners with other universities and alumni from other universities will be on many departures. While some of the Spartan Pathway's tours are exclusive to just MSU alumni, on many of the tours we partner with other universities/organizations that have travel programs. Space allotments for these tours are given to each university and after a guaranteed time allotted for reservations, available space is opened to all universities/organizations. Therefore, some departures may have universities with greater numbers of alumni on the tour than MSU.

MICHSTNITS24

**FREE Expedition Library**  
AN EXCLUSIVE EARLY  
RESERVATION BONUS

Reserve your space by

**March 22, 2024**

to receive the FREE Orbridge Expedition Library we've assembled for this program.\*\*



**SPARTAN  
PATHWAYS TRAVEL**  
MICHIGAN STATE UNIVERSITY ALUMNI

MSU Alumni Office  
535 Chestnut Road, Room 300  
East Lansing, MI 48824-2005

PRSRT STD  
U.S. POSTAGE  
PAID  
PERMIT NO. 825  
SAN DIEGO, CA