



SPARTAN
PATHWAYS TRAVEL
MICHIGAN STATE UNIVERSITY ALUMNI

JULY 31 - AUGUST 6, 2024

with optional
VICTORIA PRE-TOUR

Discover the CANADIAN ROCKIES by Rail



BOOK WITH
CONFIDENCE

30-day refund
guarantee

An unrivaled expedition through the
Canadian Rockies featuring two days by rail
aboard the *Rocky Mountaineer* in GoldLeaf class



Dear Spartans,

We are pleased to invite you to join this well-paced sojourn through Canada's glorious Rocky Mountains—highlighted by two days traveling aboard the *Rocky Mountaineer* in GoldLeaf Service—with visits to the stunning areas of Lake Louise and Banff.

En route, embrace the dynamic changes in scenery as you wind through lush green ranchlands and flowing river canyons surrounded by mountain peaks.

Enjoy guided tours of Lake Louise and Moraine Lake, and take advantage of leisure time to explore the small hamlets as well as Banff National Park.


Splendid evenings await at the close of each inspiring day, including three nights of relaxation at a well-appointed and memorable resort property.

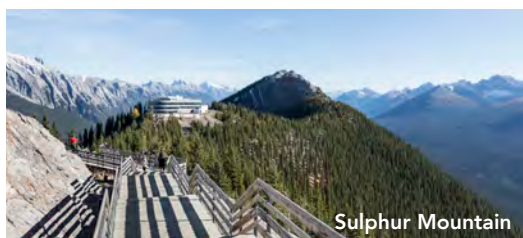
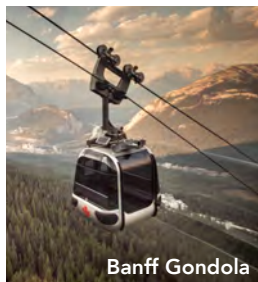
Space is limited. With significant savings of more than \$1,000 per couple, we anticipate this tour will fill quickly, so be certain to reserve your spot today and share this brochure with family and friends who may be interested in traveling with you.

Please reserve online at msu.orbridge.com, by calling (866) 639-0079 or by returning the enclosed reservation form.

Go Green,

Regina Cross
Director, Spartan Pathways Travel Program
MSU Alumni Office
(888) 697-2863

 Orbridge takes seriously the responsibility to minimize our global environmental impact. Each year we plant 100,000 trees in U.S. State Forests with afforestation needs as an ongoing initiative among our evolving sustainability efforts. Learn more at orbridge.com/going-green.



Your 7-Day Itinerary (subject to change)

Day 1: En Route from U.S. / Arrive in Vancouver, British Columbia, Canada (R)
Welcome reception
Overnight: Fairmont Hotel Vancouver

Day 2: Vancouver (B)
Guided city tour, afternoon at leisure
Overnight: Fairmont Hotel Vancouver

Day 3: Vancouver / *Rocky Mountaineer* / Kamloops (B,L)
Fraser Canyon, fertile Thompson Valley
Overnight: Kamloops Lodging

Day 4: Kamloops / *Rocky Mountaineer* / Banff, Alberta (B,L)
Shuswap Lake, Continental Divide, Kicking Horse River
Overnight: The Rimrock Resort Hotel

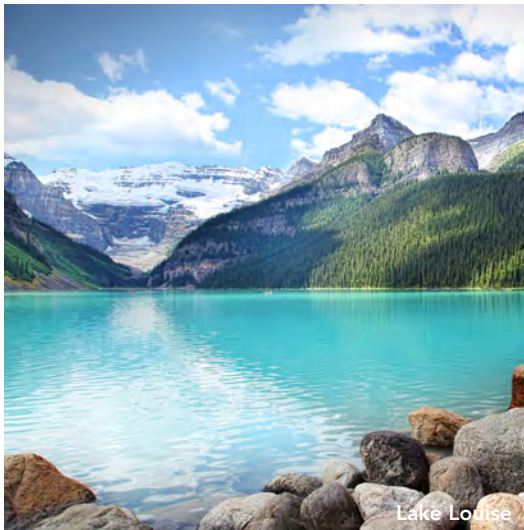
Day 5: Banff (B)
Banff Gondola, leisure time in town,
Overnight: The Rimrock Resort Hotel

Day 6: Banff / Lake Louise / Moraine Lake (B,L,D)
Lake walks and photo opportunities,
farewell dinner
Overnight: The Rimrock Resort Hotel

Day 7: Banff / Calgary / Depart for U.S. (B)
(B = Breakfast, L = Lunch, D = Dinner, R = Reception)

Activity Level: Guests should be comfortable boarding and disembarking trains without assistance, walking and moving between coaches while the train is in motion and navigating stairs to upper level of the coach. Guests should also be able to enjoy outdoor walking with sure-footing on uneven terrain, get in and out of a motor coach without assistance, and be able to manage stairs.





Lake Louise

Program Highlights

- Enjoy a panoramic city tour of Vancouver's must-see sights.
- Delight in luxurious GoldLeaf Service on board the *Rocky Mountaineer*.
- Embrace the sights from the train's glass-domed coach as you traverse over Fraser Canyon, by Shuswap Lake, and along the Continental Divide.
- Take advantage of the *Rocky Mountaineer's* private outdoor viewing platform to spot the passing wildlife, which may include elk, bighorn sheep, black and grizzly bears, and soaring eagles.
- Admire the brilliant turquoise waters of iconic Lake Louise, surrounded by towering mountain peaks that carve through the serene landscape.
- Relish three nights in the Canadian Rockies with leisure time to explore the area, or perhaps choose to visit the inviting thermal waters of nearby Banff Hot Springs.
- Discover the epic natural beauty of Banff National Park during a scenic gondola ride to the top of Sulphur Mountain.

GoldLeaf Service Includes:

- Bi-level coach with full-length panoramic windows
- Reclining upper-level heated seats
- Exclusive access to a private outdoor viewing platform
- Unlimited beverages (including beer, wine, and premium spirits)
- À la carte meal service in a lower-level dining room
- Gourmet meals that feature locally sourced ingredients prepared by an onboard culinary team

What's Included

- 6 nights luxury hotel accommodations
- 2 full days traveling on the *Rocky Mountaineer* in premium GoldLeaf Service
- 6 breakfasts, 3 lunches, and a special welcome reception and farewell dinner
- Full guiding services of an Orbridge Travel Director
- All activities listed on the 7-day itinerary
- Private deluxe motor coach transportation with air conditioning and reclining seats
- Luggage portage
- Gratuities for Orbridge Travel Director, *Rocky Mountaineer* staff, drivers, porters, housekeeping, and wait staff for included meals
- Airport transfers for guests arriving and departing during the suggested times



Fraser Canyon

Your Travel Director:

Your expert Orbridge Travel Director will offer additional enrichment during this journey.

With their expertise of cultural history, local flora and fauna, and natural characteristics of the Canadian Rockies, you'll return home with a deeper appreciation of your northern adventures—accompanied by your beautiful photographs, of course.



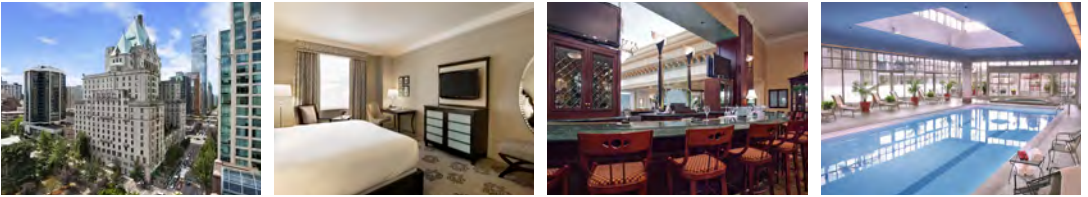
Accommodations (subject to change)

FAIRMONT HOTEL VANCOUVER

This opulent gem, known as the “Castle in the City,” quickly became a landmark in Vancouver after opening in 1939.

The hotel has hosted many famous entertainment acts over the years, and was once even home to the Canadian Broadcasting Corporation.

The recently renovated hotel features distinguished restaurants and lounges, gym, and spa.



KAMLOOPS LODGING

Accommodations in Kamloops are determined by *Rocky Mountaineer* and are the best available in the area. Kamloops properties are considered moderate 3-star hotels and satisfy our standards of cleanliness and comfort.

THE RIMROCK RESORT HOTEL

Prepare for a truly remarkable experience featuring superb hospitality, deluxe amenities and unmatched décor.

Located in the heart of the Canadian Rockies—on Sulphur Mountain in Banff National Park—The Rimrock Resort Hotel offers exceptional views of the Rockies, delightful fine dining options, and a luxury spa.

The property is a quick minute drive to the village of Banff and just steps from the Banff Upper Hot Springs and Banff Gondola.



Optional Pre-Tour Victoria



Enjoy two nights in delightful Victoria—British Columbia’s picture-perfect capital. This colorful pedestrian-friendly city is an ideal spot for whale watching, biking, shopping, and sampling from the wide variety of cafés and restaurants that line bustling Government Street. Savor the island’s relaxing pace by exploring its lush gardens, and admire the historical architecture while embracing Victoria’s friendly ambiance.

Pre-Tour Itinerary (subject to change)

Day +1: Arrive in Victoria, British Columbia

Afternoon and evening at leisure
Overnight: Fairmont Empress

Day +2: Victoria (B)

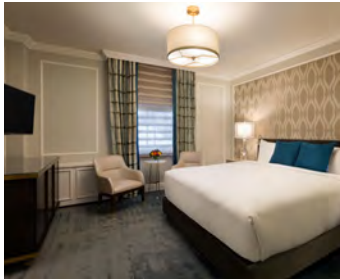
Guided panoramic tour of Victoria,
afternoon and evening at leisure
Overnight: Fairmont Empress

Day +3: Depart Victoria / Vancouver / Main Program Begins (B)

Explore Butchart Gardens, ferry to
mainland Vancouver, join main program

What’s Included

- A 1.5 hour ferry cruise from Victoria to Vancouver across the Strait of Georgia
- 2 nights accommodations at the Fairmont Empress (shown below) or similar, with breakfast each morning
- A guided panoramic city tour
- Admission to Butchart Gardens
- Gratuities to local guide
- Private group airport transfer for guests arriving at the suggested times



Discover the CANADIAN ROCKIES by Rail

JULY 31 - AUGUST 6, 2024

Victoria Pre-Tour: July 29-31, 2024

Reserve by Credit Card:

Online: msu.orbridge.com

Phone: (866) 639-0079

Fax: (206) 452-5655

Reserve by Check:

Made payable to **Orbridge, LLC**

Mail to: Orbridge, P.O. Box 1376

Poulsbo, WA 98370

| Category | Standard Rate | Special Rate* |
|---------------|---------------------|---------------|
| Double | \$6,999 | \$6,495 |
| Deluxe Double | \$8,299 | \$7,795 |
| Single | \$10,999 | \$10,495 |
| Deluxe Single | \$12,399 | \$11,895 |

Deluxe Double category includes upgrades at Fairmont Hotel Vancouver (to Junior Suite) and The Rimrock Resort Hotel (to Premium Room). Availability is limited; first-come, first-served.

Victoria Pre-Tour: \$1,195*
Single Pre-Tour: \$1,595

We strongly suggest purchasing travel insurance. Travel insurance information will be sent to you with your email confirmation from the MSU Alumni Office. For more information, contact Orbridge at (866) 639-0079 or you may call the MSU Alumni Office at (888) 697-2863.

GUEST INFORMATION:

Guest #1 Name (Title/Salutation): _____

Email: _____ Class Year: _____

Home Phone: _____ Alt. Phone: _____

Address: _____

City: _____ State: _____ Zip: _____

Guest #2 Name (Title/Salutation): _____

Email: _____ Class Year: _____

Home Phone: _____ Alt. Phone: _____

DEPOSIT PAYMENT:

Check ACH (Automated Clearing House) MasterCard/Visa American Express Discover

Card #: _____ Exp. Date: _____ CV#: _____

Name (as printed on card): _____

Billing Address (if different from above): _____

City: _____ State: _____ Zip: _____

CATEGORY SELECTION & DEPOSIT:

Category Preference: 1st choice _____ 2nd choice _____

_____ guests joining pre-tour (\$500/person) +

_____ guests joining program (\$850/person) = **TOTAL DEPOSIT: \$** _____

I/we have read, understand, and agree to the full Terms & Conditions at terms.orbridge.com; and I/we agree that Orbridge, LLC is authorized to charge my credit card above and/or take my/our deposit for this program.

Signature: _____ Date: _____

Reservations, Deposits and Final Payment. To secure your reservation, deposits are due upon placing a reservation as follows: \$850 per person per program and \$500 per person for any pre/post-tour. Orbridge accepts payment by check, ACH, wire or major credit card. Final payment is due 90 days prior to the departure date. Reservations made after the final payment due date are due at the time of registration. If final payment is not received by Orbridge by the final payment due date, Orbridge may cancel your reservation in its sole discretion with no right of refund. CST#2098750-40 WST#602828994

Reservation Grace Period. Reservations made 121+ days prior to the departure date may be cancelled within 30 days from the reservation date ("Grace Period") for a full refund. Notice of cancellation must be received in writing during the Grace Period. The date of receipt will be used for the effective date.

Reservation Cancellations and Refunds. Notice of cancellation must be submitted to Orbridge in writing. The date of receipt will be used for the effective date. If the cancellation notice is received after the Grace Period (if applicable): (a) 91+ days prior to the departure date, all monies paid will be refunded less an administrative fee of \$350 per person for the main program and \$200 per person for a pre/post-tour; (b) 90-76 days prior to the departure date, a 25% cancellation fee for the full cost of the program and the balance will be refunded; (c) 75-61 days prior to the departure date, a 50% cancellation fee for the full cost of the program and the balance will be refunded; (d) 60-46 days prior to the departure date, a 75% cancellation fee for the full cost of the program and the balance will be refunded; (e) within 45 days prior to the departure date, a 100% cancellation fee for the full cost of the program. A 100% cancellation fee applies to all non-refundable airfare. Refunds, if any, will be processed within 30 days of our receipt of your written notice.

For complete Terms & Conditions, visit terms.orbridge.com | Copyright © 2023 Orbridge, LLC | orbridge.com | (866) 639-0079

*Special group rate; limited offer. Rates are per person based on double occupancy except where noted as Single, in U.S. dollars. Airfare not included. Single availability limited. **A complement to the educational component of this journey, Expedition Libraries are curated collections of useful resources and background reading tailored to this program. Place your deposit on or before the specified date, and one Expedition Library per household will be sent after receipt of final payment. Libraries may be purchased; please call for details.



MICHST.CRBR.24.2

CUT HERE

Discover the CANADIAN ROCKIES by Rail

JULY 31 - AUGUST 6, 2024

Special Alumni Rate: Save more than \$1,000
per couple

Michigan State University Alumni Office Spartan Pathways Disclaimer:

The Michigan State University Alumni Office (the MSU Alumni Office or MSUAO) and the Spartan Pathways Travel Program is not the Tour Operator. The MSUAO is not responsible for the changes of flight times, fare changes, dishonor of airline, hotel or motor coach transportation and car rental reservations, delays, losses, injuries, inconveniences, cessation of operations, airline or tour operator bankruptcies, acts of God, or any other event beyond our control. The MSUAO acts only as a sponsor with respect to the travel services, and it shall not be responsible for changes to flight times, fare changes, dishonor of airline, hotel or other reservations, injury, damage, loss of baggage, accidents or for the acts or defaults of any person or entity engaged in providing services to participants or in carrying out other arrangements of the tour. Further, the MSUAO shall not be responsible for losses or additional expenses of the participant due to sickness, weather, strike, civil unrest, acts of terrorism, pandemic, epidemic, quarantine, acts of God, governmental intervention, or other causes beyond its control. The MSUAO shall not be responsible for alteration in the itinerary as deemed necessary for carrying out the tour and the Tour Operator may substitute hotels of similar quality. The Tour Operator may postpone or cancel any tour prior to departure. The MSUAO or the Tour Operator may decline to accept or to retain any person as a member of the tour should such person's physical or mental health, actions or general deportment impede the operation of the tour or the rights or welfare of the other participants. No refund will be made for the unused portion of any tour. By embarking upon travel, the participant voluntarily assumes all risk involved in such travel, whether expected or unexpected. Participant is hereby warned of the above risks as well as possible travel industry force majeure, bankruptcies and medical and climatic disruptions, and the possibility participant may be unable to travel as scheduled because of personal emergency. Participant is advised to consider obtaining appropriate insurance coverage against these risks. Applicants for participation on this tour accept in full all the conditions set forth above. The MSUAO partners with other universities and alumni from other universities will be on many departures. While some of the Spartan Pathway's tours are exclusive to just MSU alumni, on many of the tours we partner with other universities/organizations that have travel programs. Space allotments for these tours are given to each university and after a guaranteed time allotted for reservations, available space is opened to all universities/organizations. Therefore, some departures may have universities with greater numbers of alumni on the tour than MSU.

MICHST.CRBR.24-2

FREE Expedition Library
AN EXCLUSIVE EARLY
RESERVATION BONUS

Reserve your space by
March 15, 2024

to receive the FREE Orbridge Expedition
Library we've assembled for this program.**



**SPARTAN
PATHWAYS TRAVEL**
MICHIGAN STATE UNIVERSITY ALUMNI

MSU Alumni Office
535 Chestnut Road, Room 300
East Lansing, MI 48824-2005

PRSRT STD
U.S. POSTAGE
PAID
PERMIT NO. 825
SAN DIEGO, CA