

SWISS ALPS & THE ITALIAN LAKES



SPONSORED BY



**MICHIGAN STATE UNIVERSITY
ALUMNI ASSOCIATION**

MAY 23 – JUNE 1, 2018

Other dates available upon request



A World Apart

The story of travel involves more than a ticket and a passport. It should weave together discovery, education and humanity, the best elements of any compelling tale. Your personal travel story begins with our commitment to delivering authentic experiences with local people.

The incomparable value of your journey lies in the personalized care you receive from your Travel Director and the knowledge you gain from expert guides and lecturers, who call this area home.

By eliminating logistical worries, your multilingual Travel Director allows you to immerse yourself comfortably in your surroundings. This high-caliber professional makes you feel safe and important by creating a convivial, welcoming atmosphere.

The other important characters in this story are the guides and lecturers, whose regional expertise shines in their insider perspective and commentary.

With these specialists at your side, become intimately engaged in the rhythm of these Swiss and Italian communities, adding another memorable chapter to the rich story of your life.

Inspiring Moments

- ▶ Witness majestic scenery aboard the **Bernina Express**, the highest rail crossing in the Alps.
- ▶ Cruise glamorous **Lake Como** on a private boat.
- ▶ Bask in the Italian sun during lunch in **Bellagio** on a rooftop terrace overlooking Lake Como.
- ▶ Fall for the charm of Isola dei Pescatori, a tiny island fishing village in Lake Maggiore's **Borromean Islands**.
- ▶ Wind your way through the stunning **Maloja Pass**.
- ▶ Explore **St. Moritz**, jet-set resort town and idyllic alpine hiking locale.



Dear Alumni and Friends,

Treat your senses to awe-inspiring scenery, fresh mountain air, savory cuisine and more as you join us on a journey to the Swiss Alps and the Italian Lakes.

From cosmopolitan St. Moritz in the Engadin Valley, explore the Alps with an included railway and gondola pass. Continue to Italy, and discover Stresa, the Borromean Islands and Milan. Along the way, ride the Rhaetian Railway in the Bernina landscape of the Alps and visit Milan's church of Santa Maria delle Grazie with Leonardo's "The Last Supper."

This expertly planned itinerary features the perfect blend of guided excursions and time to enjoy the thrill of discovery on your own. Get an in-depth look at the local culture and history through exclusive educational content, a special feature of all Alumni Campus Abroad® programs.

Go Green!

Regina Cross BS '91

Director of Alumni Travel

Michigan State University Alumni Association

We strongly suggest purchasing travel insurance. Travel insurance information will be sent to you with your confirmation letter from the MSU Alumni Association.

800-323-7373

michst.ahitravel.com

UNESCO World Heritage

Two UNESCO World Heritage sites are featured in this comprehensive program:

1. **Rhaetian Railway in the Bernina Landscape**, Switzerland and Italy
2. **Church and Dominican Convent of Santa Maria delle Grazie with "The Last Supper" by Leonardo da Vinci**, Milan, Italy





St. Moritz



Bellagio

Discover the magic of stunning mountain vistas and glittering glacial waters on this trip to the Swiss Alps and Italy's Lake District. Start in the glamorous Engadin resort town of St. Moritz, Switzerland, the perfect base from which to immerse yourself in the beauty of the Alps and the charm of the villages tucked within. Your journey continues south to Stresa, Italy. While staying at this retreat on the shores of Lake Maggiore, visit some of Italy's most famous lake towns, discover the Borromean Islands and stroll through fashionable Milan. Like literary luminaries of the 19th century, find your own inspiration among the region's architecture, picturesque views and welcoming local people.

DAY ONE

IN TRANSIT

Depart for Zürich, Switzerland. †

DAY TWO

D

ZÜRICH, SWITZERLAND | ST. MORITZ

Upon arrival in Zürich, transfer † to St. Moritz.

Check in to the Hotel Schweizerhof.

Join your fellow travelers for a Welcome Reception, followed by a Welcome Dinner.

DAY THREE

B

ZUOZ | ST. MORITZ

Enrichment: *Essential Switzerland.* Learn about the culture and history of Switzerland through objects that symbolize the country.

Discovery: *St. Moritz and Zuoz.* Explore St. Moritz with a local guide. See highlights and step inside a bakery and other businesses to meet the shopkeepers who make this mountain retreat so sweet. Then, continue by train to Zuoz. A walking tour showcases the charming public square of this picturesque Upper

Engadin village. Stroll through narrow streets lined by brightly colored buildings, many constructed in the 13th century.

Free Time: The afternoon is yours to enjoy St. Moritz and its surroundings at your leisure. Hike around postcard-perfect Lake St. Moritz or take in the fresh Alpine air using your included gondola pass, which gives you access to 13 cable cars, funiculars and chairlifts.

DAY FOUR

B | L

TIRANO, ITALY

Discovery: *Bernina Express.* Wind your way from craggy mountain peaks to palm-lined streets along a train ride to Tirano, Italy. The Bernina Express travels along one of Europe's most impressively engineered rail routes through mountain passes and Alpine villages. Enjoy free time in Tirano.

Savor an Italian lunch at an osteria in Tirano.

Enrichment: *Meet the People.* Sit down with some St. Moritz residents for a discussion about Swiss life.

DAY FIVE

B | D

ST. MORITZ

Free Time: Pass the day at leisure in St. Moritz and the Engadin valley. Use your included gondola pass to explore, enjoy a ride on one of the hotel's bicycles or hike through mountain forests.

Discovery: *Fondue.* Dip into traditional Swiss cuisine with a fondue dinner at a mountain chalet overlooking St. Moritz.



DAY SIX

B | L | D

STRESA, ITALY

Discovery: *The Road to Stresa.* Take a scenic journey to Stresa. Begin with a thrilling drive through the Maloja Pass, filled with hairpin turns and switchbacks. Enjoy views of mirrored lakes and quaint Swiss villages. Cross the Italian border and arrive in the town of Tremezzo on the shore of Lake Como. Cruise to Bellagio and continue by boat to Como before finishing the scenic drive to Stresa.

Stop in Bellagio for lunch with a view of Lake Como, perhaps the region's most famous lake. In Stresa, check in to the Hotel La Palma.

DAY SEVEN

B

BORROMEAN ISLANDS

Enrichment: *Italy's Lake District.* Learn the history of this popular and glamorous destination.

Discovery: *The Borromean Islands.* Cruise Lake Maggiore to Isola Madre and explore its lush, English-style gardens. Continue to Isola dei Pescatori. Surrounded by the rustic charm of the island's picturesque fishing village, enjoy lunch on your own. Wander its narrow streets strung with fishing nets and adorned with shrines to the Madonna. Conclude your island cruise with a visit to Isola Bella, whose beauty has been extolled by writers over the centuries. Explore its 17th-century baroque palace that features a mosaic grotto and an astounding collection of art and antiques. Stroll through lush, hanging gardens filled with Greek and Roman statues while listening to the songs of rare birds.



Enrichment: *Renaissance Art.* Examine the genius of Michelangelo and Leonardo da Vinci, who have influenced scores of painters and sculptors following in their footsteps.

DAY EIGHT

B

MILAN

Discovery: *Milan.* Visit the Church of Santa Maria delle Grazie. Step inside the rectory to behold Leonardo da Vinci's masterpiece, "The Last Supper." Next, discover the world of opera at La Scala Museum, which gives you a peek into this glamorous world. Then see the 14th-century Duomo, a Gothic cathedral defended by 2,244 marble saints and nearly 100 scowling gargoyles.

Free Time: Enjoy lunch and some time on your own in Milan. For an incomparable view of the city and its surroundings, walk (or take the elevator!) to the roof of the Duomo. Next to the Duomo is Galleria Vittorio Emanuele II, the 19th-century shopping arcade named after the first king of Italy. This elegant shopping

INCLUDED FEATURES

ACCOMMODATIONS

(With baggage handling.)

- Four nights in St. Moritz, Switzerland, at the first-class Hotel Schweizerhof.
- Four nights in Stresa, Italy, at the first-class Hotel La Palma.

TRANSFER

- Deluxe motor coach transfers during the land program, including baggage handling.

EXTENSIVE MEAL PROGRAM

- Eight breakfasts, three lunches and four dinners, including Welcome and Farewell Dinners; tea or coffee with all meals, plus wine with dinner.
- Take advantage of leisure time to try the local cuisine independently.

YOUR ONE-OF-A-KIND JOURNEY

- Expert-led Enrichment programs enhance your insight into the region.
- Discovery excursions highlight the local culture, heritage and history:
 - Get to know glamorous St. Moritz.
 - Admire the pristine Alpine scenery during a ride on the Bernina Express.
 - Travel through the Maloja Pass, one of the most scenic Alpine roads.
 - Cruise Lake Como from Bellagio to Como.
 - Visit the pretty Borromean Islands of Lake Maggiore.
 - Explore Milan, Italy's fashion capital and home to Leonardo's masterpiece, "The Last Supper."
 - Savor authentic local flavors during a lesson in preparing regional cuisine.
- Free time to pursue your own interests.
- Welcome and Farewell Receptions to mingle with fellow travelers.
- Clearly hear your English-speaking guide with your own VOX headset.
- Tipping of guides and drivers.
- Complimentary travel mementos.



Duomo, Milan

center features chic boutiques, some of Milan's most exclusive shops and several cafés and restaurants.

Return to Stresa for an evening at leisure.

DAY NINE

B | L | D

STRESA

Discovery: *The Piedmontese Kitchen.*

Take a drive into the hills to a family-owned restaurant to learn how to prepare the delicious regional cuisine. Then, tuck into this tasty meal, complemented by the view of the lake.

Free Time: Enjoy a half day in Stresa. Shop for mementos, stroll past art deco hotels along the lakefront and enjoy the town's scenic views.

This evening, join your fellow travelers at your Farewell Reception, followed by a Farewell Dinner.

DAY TEN

B

IN TRANSIT

After breakfast, transfer✈ to the airport for the return flight to your gateway city.

Note: *Itinerary may change due to local conditions. Walking is required on many excursions, and surfaces may be uneven or unpaved.*

✈ *Flights and transfers included for AHI FlexAir participants*

BL|LD denotes included breakfasts, lunches and dinners.



Hotel Schweizerhof, St. Moritz



Hotel La Palma and Lake Maggiore, Stresa



©Rhätische Bahn (Bernina Express)

AHI TRAVEL EXPERTISE

From your reservation to your return home, we are here to ensure you have the adventure of a lifetime.


Before you go:


- ▶ **Travel Consultants** | These experts stand ready to answer your questions about activities, meals, accommodations and more as they guide you through the reservation process.
- ▶ **Passenger Service Representative** | Once you have reserved your spot, enjoy personalized assistance from this specialist, your one point of contact who will help you with everything from arranging flights to booking elective activities to fulfilling special requests.
- ▶ **Travel Information** | Receive extensive destination information and travel tips compiled by our travel-savvy team to fully prepare you for your journey.

Once you arrive:

On the ground, three layers of top-quality professionals offer their insiders' perspective. From suggesting the best café or pub to sharing a laugh over the stories of the day, our dedicated team takes your adventure to the next level.

- ▶ **Travel Director** | Throughout your journey, you will be in the care of a seasoned AHI travel professional who will manage all the logistics, allowing you to relax and simply soak up the ambience. Resourceful, knowledgeable and attentive, your Travel Director helps to ensure you enjoy an unforgettable travel experience.
- ▶ **Expert Guides** | Who better to show you around than the people who live there? We've specially selected informed and enthusiastic local professional guides who understand the needs of our educated and curious travelers. Warm and genuine, they're ready to share their passion for their country with you.
- ▶ **Lecturers** | Coming from all walks of life, our entertaining local lecturers open your eyes to history and current events. The breadth of their knowledge deepens your appreciation for the region and its heritage.

HOTEL SCHWEIZERHOF | ST. MORITZ 

HOTEL LA PALMA | STRESA 

Our travel experts have carefully selected these first-class properties for their prime locations. They are ideally located for exploring the region's renowned landmarks, while providing opportunities to immerse yourself in local life. Of utmost importance is the quality of the services, amenities and accommodations, allowing you to fully enjoy your stay.

Reserve your trip to Switzerland & Italy today!

Trip #:1-23870W

Send to: Swiss Alps & Italian Lakes
MSU Alumni Association
c/o AHI Travel
International Tower-Suite 600
8550 W. Bryn Mawr Avenue
Chicago, IL 60631

Please contact AHI Travel at **800-323-7373** with questions regarding this trip or to make a reservation. You may also call the MSU Alumni Association at **888-697-2863**.

Full Legal Name (exactly as it appears on passport)

(1) _____
Title First Middle Last Date of Birth

Email: _____

(2) _____
Title First Middle Last Date of Birth

Email: _____

Street Address: _____

City: _____

State: _____ ZIP: _____

Home: (_____) _____ Cell: (_____) _____

Sharing with _____ (Form sent separately.)

I/we authorize you to make my/our reservations as follows:

Land Program and AHI FlexAir

I/we reserve the Land Program and request the AHI FlexAir to Zürich, Switzerland, with return from Milan, Italy, to depart from:

Departure City

- Please contact me regarding air options.
 Please send me information on upgrading my flights.

Land Program

I/we will make my/our own air arrangements and transfers.

Single Accommodations

- I prefer single accommodations at an additional \$395 (limited availability).
 I request assistance in securing a roommate but will accept a single, if one is available at this time, and pay the single supplement. Should a roommate be found, I understand the supplement will no longer apply.

Reservations are subject to availability and processed on a first-come, first-served basis. Reservations to be paid in full by **March 9, 2018** (75 days prior to departure). Reservations received after this date must be accompanied by payment in full. Final payment may be made by personal check, MasterCard, Visa, Discover or Amex. Make checks payable to AHI Travel.

Enclosed is a deposit of _____ (\$600 pp required) to reserve _____ place(s).

- Accept my check made payable to **AHI Travel**.
 Charge my: MasterCard Visa Discover Amex

Card # _____

Expires _____ / _____

(Signature as it appears on credit card)

Please note: Any payment to AHI Travel constitutes your acceptance of the terms and conditions set out herein, including but not limited to the cancellation terms.

If you are interested in making independent travel arrangements before and/or after this program, please contact **AHI Travel** at **800-323-7373** no later than **60 days prior to departure** and they will be happy to assist you with your reservations. *A nonrefundable service fee and additional air/land charges based on reservations apply.*

PROGRAM DATES

Air Program dates: May 23 – June 1, 2018

Land Program dates: May 24 – June 1, 2018

LAND PROGRAM

Full Price	Special Savings	Special Price*
\$3,645	\$250	\$3,395

*Special Price valid if booked by the date found on the address panel.
VAT is an additional \$295 per person. All prices quoted are in USD, per person, based on double occupancy and do not include air transportation costs (unless otherwise stated).

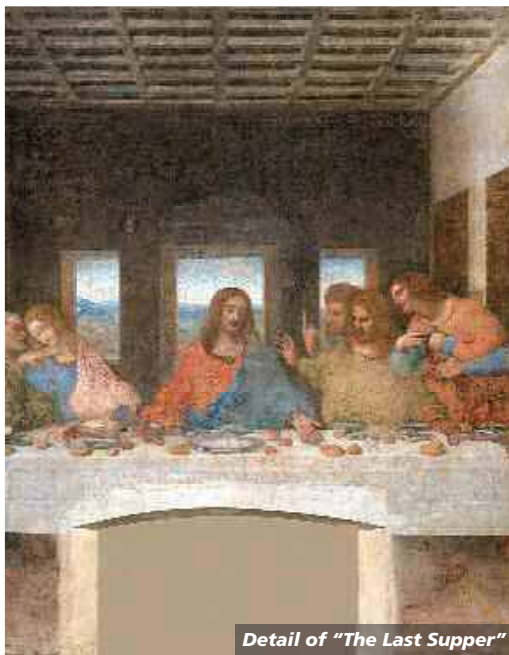
Single accommodations are an additional \$395 (limited availability).

Let us arrange your flights!

✈ **AHI FlexAir** | Our experts are ready to assist you in booking flights. Our personalized air program offers the following advantages:

- ▶ a **price guarantee** to protect you from fuel surcharge increases after ticket purchase
- ▶ arrival and departure **transfers** on most flights
- ▶ **flexibility** to change or cancel your reservations without penalty up to 60 days before departure on most flights
- ▶ **assistance** in the event of schedule changes or delays
- ▶ flight insurance worth up to \$250,000, subject to policy terms

**Travel stress-free
with AHI FlexAir.**



Detail of "The Last Supper"

NOT INCLUDED-Fees for passports and, if applicable, visas, entry/departure fees; personal gratuities; laundry and dry cleaning; excursions, wines, liquors, mineral waters and meals not mentioned in this brochure under included features; travel insurance; all items of a strictly personal nature.

MOBILITY AND FITNESS TO TRAVEL-The right is retained to decline to accept or to retain any person as a member of this trip who, in the opinion of AHI Travel is unfit for travel or whose physical or mental condition may constitute a danger to themselves or to others on the trip, subject only to the requirement that the portion of the total amount paid which corresponds to the unused services and accommodations be refunded. Passengers requiring special assistance, including without limitation those who permanently or periodically use a wheelchair, must be accompanied by someone who is fit and able to assist them, and who will be totally responsible for providing all required assistance.

AIR TRANSPORTATION-The price of air transportation offered by AHI Travel is based on Advance Purchase Excursion fares. After tickets are issued, penalties up to 100% of the ticket price may be levied. If connecting flights are requested, special promotional fares may be used, in which case penalties of as much as 100% may be assessed by the airlines if reservations are changed or canceled after ticketing. After departure, if the reservations are changed, you will be charged the higher, all year Economy class fare. VARIATIONS TO THE GROUP ITINERARY MUST BE REQUESTED NO LATER THAN 60 DAYS PRIOR TO DEPARTURE. Passengers who choose to make their own airline reservations independently will be wholly responsible for arrival and departure transfers, and any airline fees or penalties incurred as a result of program cancellation and/or change in travel dates, or airline schedule(s).

BAGGAGE-Baggage restrictions vary according to the airline policy and the class of service flown. Details will be provided with your pre-departure information. Baggage allowances are subject to change by the carrier without notice. Excess baggage charges for additional or oversized/overweight pieces are expensive and not included in your trip price; plan your wardrobe accordingly. Transport of baggage and personal effects is at the owner's risk throughout the travel program.

AUTHORITY TO USE IMAGES AND AUDIO RECORDINGS-On occasion, AHI Travel obtains, from its staff, or from trip participants, photographic or video images of passengers and trip activities. By participating in this travel program, you authorize AHI Travel, without providing compensation to you, or obtaining additional approvals from you, to include photographic and video recordings of you, as well as voice recordings included with any videos, in AHI Travel's sales, marketing, advertising, publicity and/or training activities.

RESPONSIBILITY-AHI Travel and the Sponsoring Association do not own or operate any entity which provides goods or services for this program, and act only as agents for the independent suppliers of travel conveyance, transport, accommodations or other services. All such persons or entities are independent contractors. As a result, AHI Travel and the Sponsoring Association are not liable for any negligence or willful act of any such person or entity or any third person. In addition and without limitation, AHI Travel and the Sponsoring Association are not responsible for any delays, delayed departure or arrival, missed carrier connections, loss, death, damage or injury to person or property or accident, mechanical defect, failure or negligence of any nature whatsoever caused in connection with any accommodations, transportation or other services or for any substitution of hotels or of common carrier equipment, with or without notice, or for any additional expenses occasioned thereby. Dates, Program Details and Tour costs, although given in good faith and based on tariffs, exchange rates and other information current at the time of printing, are subject to change at or before the time of departure. No revisions of the printed itinerary or its included features are anticipated, however, the right is reserved to make any changes, with or without notice, that might become necessary, with the mutual understanding that any additional expenses will be paid by the individual passenger. Baggage and personal effects are the sole responsibility of the owners at all times. If the entire program is canceled for any reason, participants shall have no claim other than for a full refund. By forwarding the deposit, the passenger certifies that he/she has no physical, mental or other condition of disability that would create a hazard for himself/herself or other passengers and accepts the terms of this contract set out herein and in more specific pre-departure passenger information. The airlines and other transportation companies concerned are not to be held responsible for any act, omission, or event, during the time passengers are not on board their conveyances. The passage contract in use, when issued, shall constitute the sole contract between the company(ies) and the passenger and/or purchaser of this trip.

CANCELLATION-All cancellations for any reason will be subject to a \$250 per person administrative fee. You may choose, at the time of cancellation, to apply the withheld administrative fee to a future AHI Travel program that will operate in the current calendar year or year following. Cancellation from 120 days to 76 days prior to departure will result in forfeiture of 10% of the entire cost of the trip per person; 75-30 days, 50% of the trip cost per person; cancellation from 29 days up to the time of departure will result in 100% forfeiture of the entire cost of the trip. We strongly suggest purchasing travel insurance. Travel insurance information will be sent to you with your confirmation letter from the MSU Alumni Association. All cancellations must be submitted in writing to AHI Travel. CANCELLATION OF TRIP OPTIONS-Purchases of optional excursions, trip extensions and additional hotel nights become fully non-refundable 45 days prior to departure. Air transportation and private transfer purchases are subject only to penalties assessed by the airlines and transfer suppliers.

All prices listed are in USD. Special offers, promotions and discounts cannot be combined. CST Registration No. 2028271-20. Fla. Seller of Travel Reg. No. ST-33300. Iowa Seller of Travel No. 520. Ohio Seller of Travel Reg. No. 8889139. Washington State Seller of Travel Reg. No. 601-820-781. PARTICIPATING AIRLINES-all IATA and ARC Member Carriers ©2017 AHI Travel Printed in the USA.

800-323-7373

michst.ahitravel.com

MICHIGAN STATE
U N I V E R S I T Y

Alumni Association

MSU Alumni Association
535 Chestnut Road
Room 300
East Lansing, MI 48824

SWISSITA18 4

800-323-7373
michst.ahitravel.com



Discover the Alpine beauty of Switzerland and Italy!

AHI Travel's mission is to deliver inspirational educational and cultural travel programs that delight travelers.

With AHI you can rely on:

- Experienced Travel Directors who attend to every detail of your journey.
- An exceptional travel value.
- Unique access to local sites.
- Flexibility and customization.
- Safety and security.



Please call or refer to our website for the most current program information, discounts and pricing.

Presorted Std.
U.S. Postage
Paid
AHI Travel